

# Unit 158

A FRESH START

mecwacare

FOR SALE



*Retirement living*

## Pascoe Vale Gardens

146 Boundary Road, Pascoe Vale VIC 3044

To book a tour call, please call Lynda on 0409 964 622.

\$630,000

**FOR SALE**

**mecwacare**

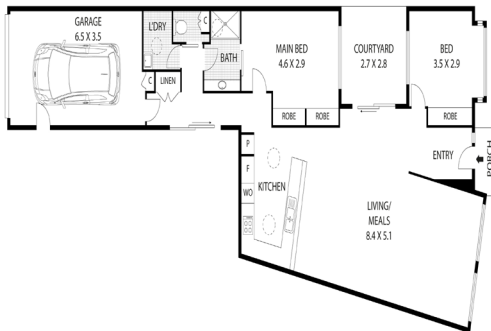


**Unit 158**

**\$630,000**

-  **2 Bedroom**
-  **1 Bathroom**
-  **1 Garage**

## FLOOR PLAN



This beautifully refurbished 2-bedroom Unit delivers an exceptional low-maintenance lifestyle.

Walking through the front door you are met with sheer space in this unit. A large, light-filled lounge/living area adjoined by an open meals area delivers versatility with furniture arrangement. A full-sized contemporary kitchen with new modern appliances and tiled splashbacks is most appealing.

The Master bedroom enjoys a semi-ensuite and the 2nd bedroom comes with built-in robes and borders a private central courtyard where you can sit for your morning cuppa. A 2nd rear courtyard offering extra space for outdoor dining is off the hallway beside the separate laundry and the internal access to a single lock-up garage with remote-controlled door.

Other features include window furnishings throughout, downlights, ducted heating and air-conditioned cooling.

## Pascoe Vale Gardens

146 Boundary Road,  
Pascoe Vale  
VIC 3044



To book a private inspection please call Lynda on 0409 964 622.

For sales, please call 03 9831 9876.

**amicum**