

Jubilee House



FEATURES:

- 40-bed luxurious facility
- Café
- Cinema
- Hair and nail salon
- Library
- Range of lounge rooms
- Indoor and outdoor areas
- Family dining room
- Landscaped courtyards

As one of the longest-serving care providers in Melbourne, *mecwacare* has a proud history of providing safe, high-quality and respectful care and lifestyle options tailored to individual needs.

mecwacare is pleased to announce the opening of a brand new 40-bed modern and luxurious boutique-style aged care facility at 52 Northcote Avenue, Caulfield in July 2019.

Jubilee House, which has been named in recognition of our 60th anniversary, will offer a range of accommodation options suitable for individuals and couples, including a selection of tastefully-decorated single and oversized rooms, and two-room suites with their own bar and kitchenette. All rooms are private with ensuite bathrooms and some have access to smart courtyards. Floor-to-ceiling windows fill this stylish home with natural light throughout.

Jubilee House will provide:

- 24-hour care and support from Registered Nurses
- Full accreditation under the Australian Aged Care Quality Standards
- Ageing-in-place accommodation in a secure and protected environment
- Delicious and nutritious meals, freshly prepared on-site
- Access to television, telephone* and internet connections in all rooms
- A vibrant lifestyle program for all interests.

**Unlimited calls within Australia (incl. mobiles)*



mecwacare

www.mecwacare.org.au

Further information
mecwacare Jubilee House
52 Northcote Avenue, Caulfield, VIC 3161
E admissions@mecwacare.org.au
P 03 8573 4812



An active lifestyle in safe and comfortable surroundings

Nestled in one of Melbourne's most sought-after locations, *mecwacare* Jubilee House is a premium aged care residence close to shops, public transport, parks, medical centres and major hospitals.

Residents will have access to 24-hour care and support, as well as an extensive program that encourages an active lifestyle in safe and comfortable surroundings. It will cater for a variety of tastes and special dietary requirements, with balanced and nutritious meals freshly prepared on-site.

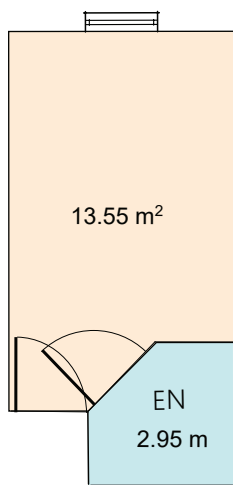
Jubilee House includes a well-appointed cinema with comfortable "gold class" seating, spacious communal dining room and lounge areas, as well as a separate family dining room and sitting area for residents to enjoy and entertain. There is also the opportunity to be pampered at *mecwahair*, an intimate on-site hair and nail salon or indulge in a coffee and cake at the *Deja Brew* café. Beautiful landscaped courtyards add to the home's overall charm.

Caring for the community since 1959

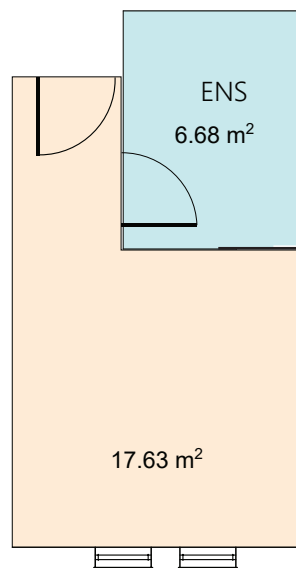
mecwacare is an organisation founded by a group of volunteers concerned about the elderly and vulnerable in their local area and is a unique story of a community caring for itself.

From humble beginnings in Malvern, *mecwacare* now provides care services in all 31 local council areas of metropolitan Melbourne and across a substantial area of regional Victoria. It is proudly a not-for-profit, non-denominational charity organisation with a reputation for excellence.

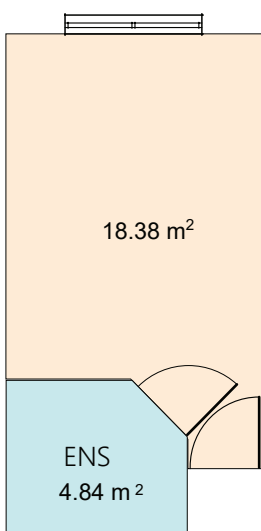
Standard room
16 - 18 m²



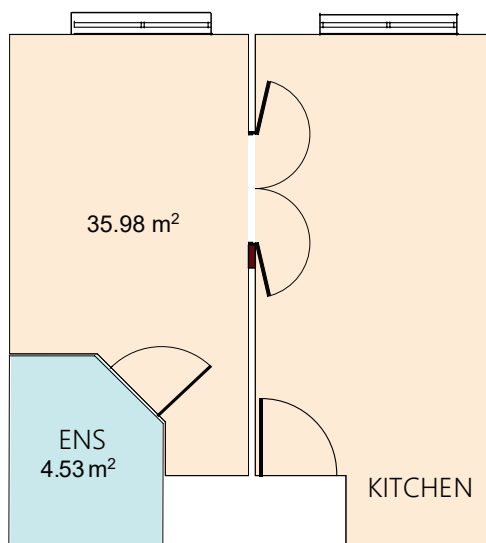
Premium room
21 - 30 m²



Superior room
19 - 25 m²



Premium suite
36 - 44 m²



Jubilee House welcomes people for both respite and permanent care. Please contact the Admissions team on 03 8573 4812 to learn more about this beautiful new home and to book a tour of the facility.

mecwacare

www.mecwacare.org.au